

Lessard-Sams Outdoor Heritage Council

Fiscal Year 2017 / ML 2016 Request for Funding



Date: June 04, 2015

Program or Project Title: Restoring the Northern Gateway

Funds Requested: \$3,000,000

Manager's Name: Todd Tuominen

Organization: City of Champlin

Address: 11955 Champlin Drive

City: Champlin, MN 55316

Office Number: (763)-923-7120

Mobile Number: (762)-258-9686

Email: ttuominen@ci.champlin.mn.us

County Locations: Hennepin

Regions in which work will take place:

- Metro / Urban

Activity types:

- Restore
- Enhance

Priority resources addressed by activity:

- Wetlands
- Habitat

Abstract:

The City of Champlin's Restore the Northern Gateway Project is a multi-year, multi-phase project that will restore and enhance shallow lakes and stream banks. Phase 2 is the City of Champlin Mill Pond aquatic and deep water habitat restoration.

Design and scope of work:

The Northern Gateway Project is a three phase high priority project in cooperation with the City of Champlin, Elm Creek Watershed Management Commission and Hennepin County to restore water resources that are the Northern Gateway to the City of Champlin. The City of Champlin Management Plan developed in 2008 has identified goals for accelerating programs and projects for improved habitat, water quality and flood control through a variety of conservation measures in areas surrounding Champlin Minnesota. Prioritization and implementation of appropriate protection, enhancement and restoration measures on area lands, streams, ditches, rivers, lakes and wetlands within the City of Champlin and Elm Creek Watershed have been accelerated through use of conservation decision making tools which aid in determining high priority projects that are beneficial to the City of Champlin, Elm Creek Watershed and the Upper Mississippi River Watershed. The Northern Gateway Project is divided into three phases. Phase 1 includes replacement of the existing Mill Pond dam. Engineering plans are complete and environmental permits have been acquired for the dam replacement in addition to acquisition of funding sources for this phase of the overall project. Currently dam decommissioning and construction of the new dam has begun in May of 2015 and will be completed by May of 2016.

Phase 2 is the Mill Pond aquatic habitat restoration through installation of habitat structures and restoration of deep water habitat refuge lake depths by removal of excess nutrient laden sediments in the three bays of the Mill Pond. Sediment investigations, hydrologic evaluations, habitat restoration concept plans and project estimates have been completed for this phase of the project. Project scope for phase 2 consists of living shallow lakes and wetland initiatives, shallow lake and wetland enhancements and shallow and deep water habitat restoration. The City of Champlin proposes to improve degraded habitats in the Northern Gateway which includes Elm Creek and the Mill Ponds. Our City staff has demonstrated the ability and capacity to complete projects with funding from previous successful grant requests. This project is high priority in the City of Champlin and Elm Creek Watershed Water Plan.

Phase 3 is a continuation of an existing 3,000 linear feet Elm Creek stream restoration project. This phase is a future funding request that includes 2,000 linear feet of stream bank restoration of Elm Creek which flows through the Mill Creek ponds and ultimately the City of Champlin into the Mississippi River. Conceptual plans have been completed in cooperation with the MNDNR, Elm Creek Management Commission and Hennepin County. Elm Creek is impaired water with low dissolved oxygen, restoring the stream banks and providing habitat structure will reduce downstream sedimentation and provide native habitat improvements including root wads, boulder vanes and rock riffles with varied substrate to enhance aquatic species habitat including sensitive species such as Blandings Turtle. The riparian areas of the creek will be restored with native planting buffer using both plugs and native seeding that will filter sediments and nutrients from direct runoff.

Our current water plan specifically identifies goals for accelerating projects for improved habitat, water quality and flood control. Phase 2 of this project allows the City of Champlin to meet these goals and open opportunities for the public that includes recreation, fishing and educational experiences. The project is time sensitive, it is essential to secure funding in conjunction with construction of the new dam.

Crops:

Will there be planting of corn or any crop on OHF land purchased or restored in this program - **No**

How does the request address MN habitats that have: historical value to fish and wildlife, wildlife species of greatest conservation need, MN County Biological Survey data, and/or rare, threatened and endangered species inventories:

The Elm Creek Watershed flows through the northern gateway of the City of Champlin. Degrading habitats within this area are of concern not only to the City of Champlin but also the Elm Creek Watershed Management Commission, Hennepin County and the Minnesota DNR. This multi-year project is significantly beneficial for aquatic habitat protection and restoration within the watershed. Previous investigations and evaluations have been completed in cooperation with the MNDNR and Hennepin County to address concerns of restoring native habitats which will return historic fish and wildlife species populations.

What is the nature of urgency and why it is necessary to spend public money for this work as soon as possible:

It is essential to secure funding in conjunction with construction of the new dam. Currently funding has been secured for phase 1 of the project. Decommissioning of the existing dam has been completed and construction of the new dam has begun in May of 2015.

Describe the science based planning and evaluation model used:

Previous modeling, evaluations and monitoring efforts have aided in identifying areas which contribute to the loss of habitat that reduce waterfowl, fish and hydrophytic vegetation. Due to multiple locations identified within close proximity in the same immediate watershed the locations were consolidated into the multiphase Northern Gateway Project.

Which sections of the Minnesota Statewide Conservation and Preservation Plan are applicable to this project:

- H2 Protect critical shoreland of streams and lakes
- H6 Protect and restore critical in-water habitat of lakes and streams

Which other plans are addressed in this proposal:

- Long Range Plan for Fisheries Management
- Tomorrow's Habitat for the Wild and Rare

Which LSOHC section priorities are addressed in this proposal:

Metro / Urban:

- Protect, enhance, and restore riparian and littoral habitats on lakes to benefit game and nongame fish species

Relationship to other funds:

- Not Listed

How does this proposal accelerate or supplement your current efforts in this area:

Phase 2 of the Northern Gateway Project supplements phase 1, the entire project focuses on restoration of impaired resources in the elm creek watershed and the northern gateway to the City of Champlin. If funds are secured for phase 2 this would accelerate our ongoing effort by continuing the current project. The project will contribute to the success of increased numbers of game fish, waterfowl and wildlife populations and provide habitat for fish, waterfowl and wildlife.

Describe the source and amount of non-OHF money spent for this work in the past:

Appropriation Year	Source	Amount
2010-2015 Phase 1	West Mississippi Watershed (\$125,000), Elm Creek Watershed (\$62,500), MNDNR (\$250,000), Hennepin County (\$1,724,000), State Bonding (\$2,750,000) and City of Champlin (\$2,100,220)	\$7,011,720
2013-2015 Phase 2	City of Champlin	\$36,427

How will you sustain and/or maintain this work after the Outdoor Heritage Funds are expended:

The City of Champlin is a long standing legal entity established under the laws of Minnesota. It is governed by a Mayor who serves a two-year term and four council members who serve four-year terms. City elections coincide with the general election held in the fall of even-numbered years. The City Council is the policy making body of city government. It is the responsibility of the Mayor and City Council to make legislative decisions based upon the power and duties of the City as prescribed by State Statute. The Mayor is the presiding officer and a regular member of the City Council and has all the powers and duties of a council member in addition to those of Mayor.

The City of Champlin relies on multiple funding sources including a local levy and multiple partnerships. These partnerships include LCCMR, Clean Water and MN State Bonding Funds. The City of Champlin in cooperation with Hennepin County, Elm Creek Water Management Commission and the MNDNR continue yearly watershed monitoring and reporting results. Longstanding partnerships with these groups allow available funding and commitment sources needed to achieve goals set to improve and maintain natural resource projects.

Explain the things you will do in the future to maintain project outcomes:

Year	Source of Funds	Step 1	Step 2	Step 3
2019	Local Tax Levy and LSOHC	Construction and Erosion Control	Erosion Control and Inspection	Maintenance Inspection and Implementation
2020	Local Tax Levy and LSOHC	Construction and Erosion Control	Erosion Control and Inspection	Maintenance Inspection and Implementation
2021	Local Tax Levy	Maintenance Inspection and Implementation	Maintenance Inspection and Implementation	Maintenance Inspection and Implementation

Activity Details:

If funded, this proposal will meet all applicable criteria set forth in MS 97A.056 - **Yes**

Will restoration and enhancement work follow best management practices including MS 84.973 Pollinator Habitat Program - **Yes**

Is the activity on permanently protected land per 97A.056, subd 13(f), tribal lands, and/or public waters per MS 103G.005, Subd. 15 - **Yes (County/Municipal, Public Waters)**

Accomplishment Timeline:

Activity	Approximate Date Completed
Planning, Design and Permitting	July 2016
Construction start following permits and contracting	2017 (June) Start Construction
Complete Phase 2 Habitat Restoration Project	2018 (December) End Construction
Maintenance and Monitoring	Ongoing

Federal Funding:

Do you anticipate federal funds as a match for this program - **No**

Outcomes:

Programs in metropolitan urbanizing region:

- Protected habitats will hold wetlands and shallow lakes open to public recreation and hunting *Long term natural resource benefits will include habitat for migratory waterfowl, fish species and wildlife. Floristic quality assessments of restored lakeshore, fish population surveys and wildlife surveys measure and evaluate the success of the restored and enhanced shallow lake. Wildlife and fish populations will be determined and reported in cooperation with the MNDNR.*

Budget Spreadsheet

Total Amount of Request: \$3,000,000

Budget and Cash Leverage

Budget Name	LSOHC Request	Anticipated Leverage	Leverage Source	Total
Personnel	\$0	\$50,000	City of Champlin Local Tax Levy	\$50,000
Contracts	\$1,884,000	\$750,000	City of Champlin Local Tax Levy	\$2,634,000
Fee Acquisition w/ PILT	\$0	\$0		\$0
Fee Acquisition w/o PILT	\$0	\$0		\$0
Easement Acquisition	\$0	\$0		\$0
Easement Stewardship	\$0	\$0		\$0
Travel	\$0	\$0		\$0
Professional Services	\$375,500	\$50,000	City of Champlin Local Tax Levy	\$425,500
Direct Support Services	\$0	\$0		\$0
DNR Land Acquisition Costs	\$0	\$0		\$0
Capital Equipment	\$0	\$0		\$0
Other Equipment/Tools	\$0	\$0		\$0
Supplies/Materials	\$740,500	\$250,000	Elm Creek Watershed Management Commission	\$990,500
DNR IDP	\$0	\$0		\$0
Total	\$3,000,000	\$1,100,000		\$4,100,000

Personnel

Position	FTE	Over # of years	LSOHC Request	Anticipated Leverage	Leverage Source	Total
Project Manager	0.25	1.00	\$0	\$25,000	Local Tax Levy	\$25,000
Staff Technician	0.40	1.00	\$0	\$25,000	Local Tax Levy	\$25,000
Total	0.65	2.00	\$0	\$50,000		\$50,000

Amount of Request: \$3,000,000

Amount of Leverage: \$1,100,000

Leverage as a percent of the Request: 36.67%

Output Tables

Table 1a. Acres by Resource Type

Type	Wetlands	Prairies	Forest	Habitats	Total
Restore	8	0	0	30	38
Protect in Fee with State PILT Liability	0	0	0	0	0
Protect in Fee W/O State PILT Liability	0	0	0	0	0
Protect in Easement	0	0	0	0	0
Enhance	6	0	0	5	11
Total	14	0	0	35	49

Table 2. Total Requested Funding by Resource Type

Type	Wetlands	Prairies	Forest	Habitats	Total
Restore	\$500,000	\$0	\$0	\$1,500,000	\$2,000,000
Protect in Fee with State PILT Liability	\$0	\$0	\$0	\$0	\$0
Protect in Fee W/O State PILT Liability	\$0	\$0	\$0	\$0	\$0
Protect in Easement	\$0	\$0	\$0	\$0	\$0
Enhance	\$500,000	\$0	\$0	\$500,000	\$1,000,000
Total	\$1,000,000	\$0	\$0	\$2,000,000	\$3,000,000

Table 3. Acres within each Ecological Section

Type	Metro/Urban	Forest/Prairie	SE Forest	Prairie	Northern Forest	Total
Restore	38	0	0	0	0	38
Protect in Fee with State PILT Liability	0	0	0	0	0	0
Protect in Fee W/O State PILT Liability	0	0	0	0	0	0
Protect in Easement	0	0	0	0	0	0
Enhance	11	0	0	0	0	11
Total	49	0	0	0	0	49

Table 4. Total Requested Funding within each Ecological Section

Type	Metro/Urban	Forest/Prairie	SE Forest	Prairie	Northern Forest	Total
Restore	\$2,000,000	\$0	\$0	\$0	\$0	\$2,000,000
Protect in Fee with State PILT Liability	\$0	\$0	\$0	\$0	\$0	\$0
Protect in Fee W/O State PILT Liability	\$0	\$0	\$0	\$0	\$0	\$0
Protect in Easement	\$0	\$0	\$0	\$0	\$0	\$0
Enhance	\$1,000,000	\$0	\$0	\$0	\$0	\$1,000,000
Total	\$3,000,000	\$0	\$0	\$0	\$0	\$3,000,000

Table 5. Average Cost per Acre by Resource Type

Type	Wetlands	Prairies	Forest	Habitats
Restore	\$62,500	\$0	\$0	\$50,000
Protect in Fee with State PILT Liability	\$0	\$0	\$0	\$0
Protect in Fee W/O State PILT Liability	\$0	\$0	\$0	\$0
Protect in Easement	\$0	\$0	\$0	\$0
Enhance	\$83,333	\$0	\$0	\$100,000

Table 6. Average Cost per Acre by Ecological Section

Type	Metro/Urban	Forest/Prairie	SE Forest	Prairie	Northern Forest
Restore	\$52,632	\$0	\$0	\$0	\$0
Protect in Fee with State PILT Liability	\$0	\$0	\$0	\$0	\$0
Protect in Fee W/O State PILT Liability	\$0	\$0	\$0	\$0	\$0
Protect in Easement	\$0	\$0	\$0	\$0	\$0
Enhance	\$90,909	\$0	\$0	\$0	\$0

Target Lake/Stream/River Feet or Miles

12,119

Parcel List

Section 1 - Restore / Enhance Parcel List

Hennepin

Name	TRDS	Acres	Est Cost	Existing Protection?
1912021320039	12021219	5	\$0	Yes
1912021330002	12021219	2	\$0	Yes
1912021330054	12021219	4	\$0	Yes
1912021340001	12021219	2	\$0	Yes
1912021340006	12021219	8	\$0	Yes
1912021340007	12021219	4	\$0	Yes
State of Minnesota	12021219	8	\$0	Yes
State of Minnesota	12021219	16	\$0	Yes

Section 2 - Protect Parcel List

No parcels with an activity type protect.

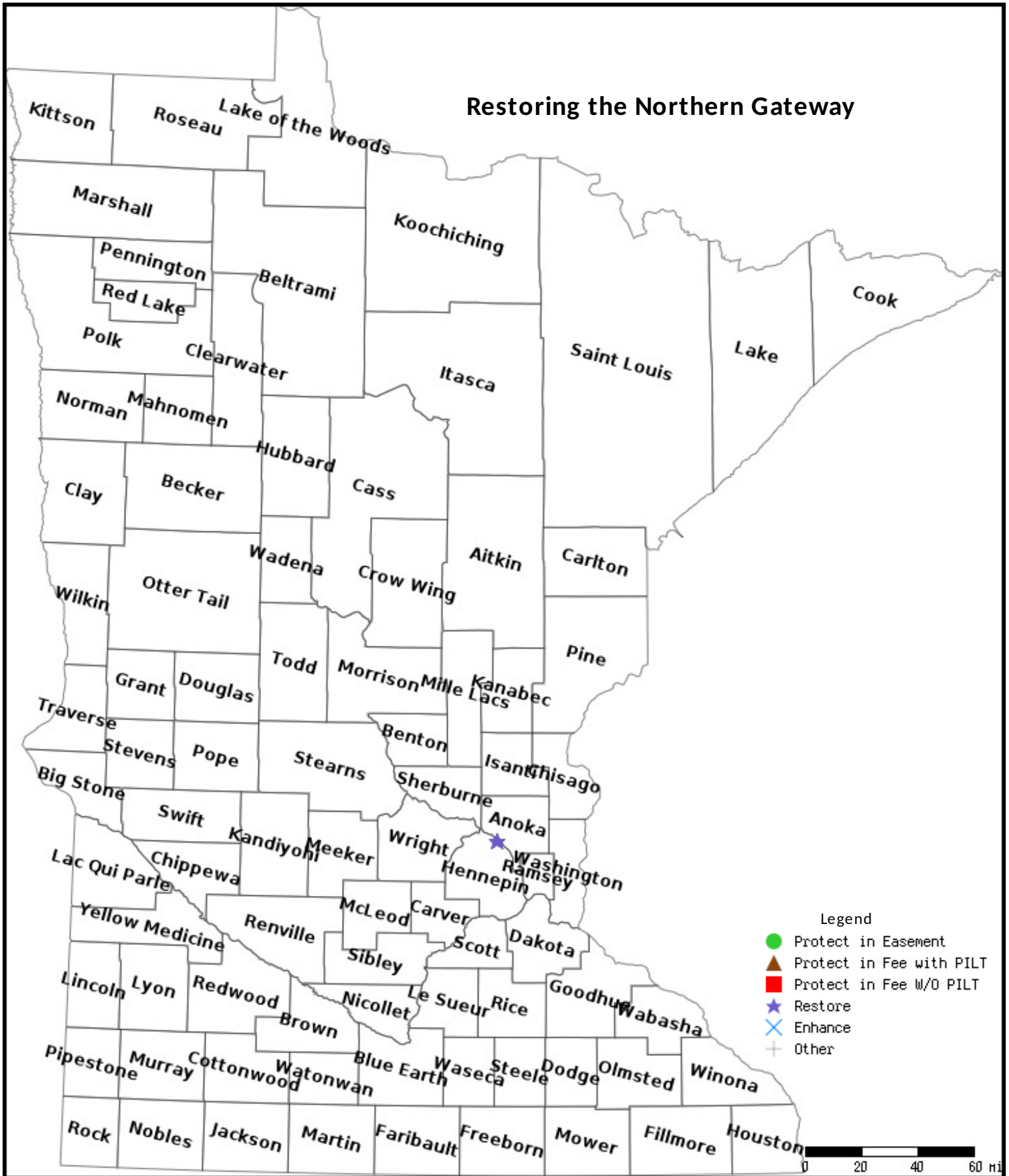
Section 2a - Protect Parcel with Bldgs

No parcels with an activity type protect and has buildings.

Section 3 - Other Parcel Activity

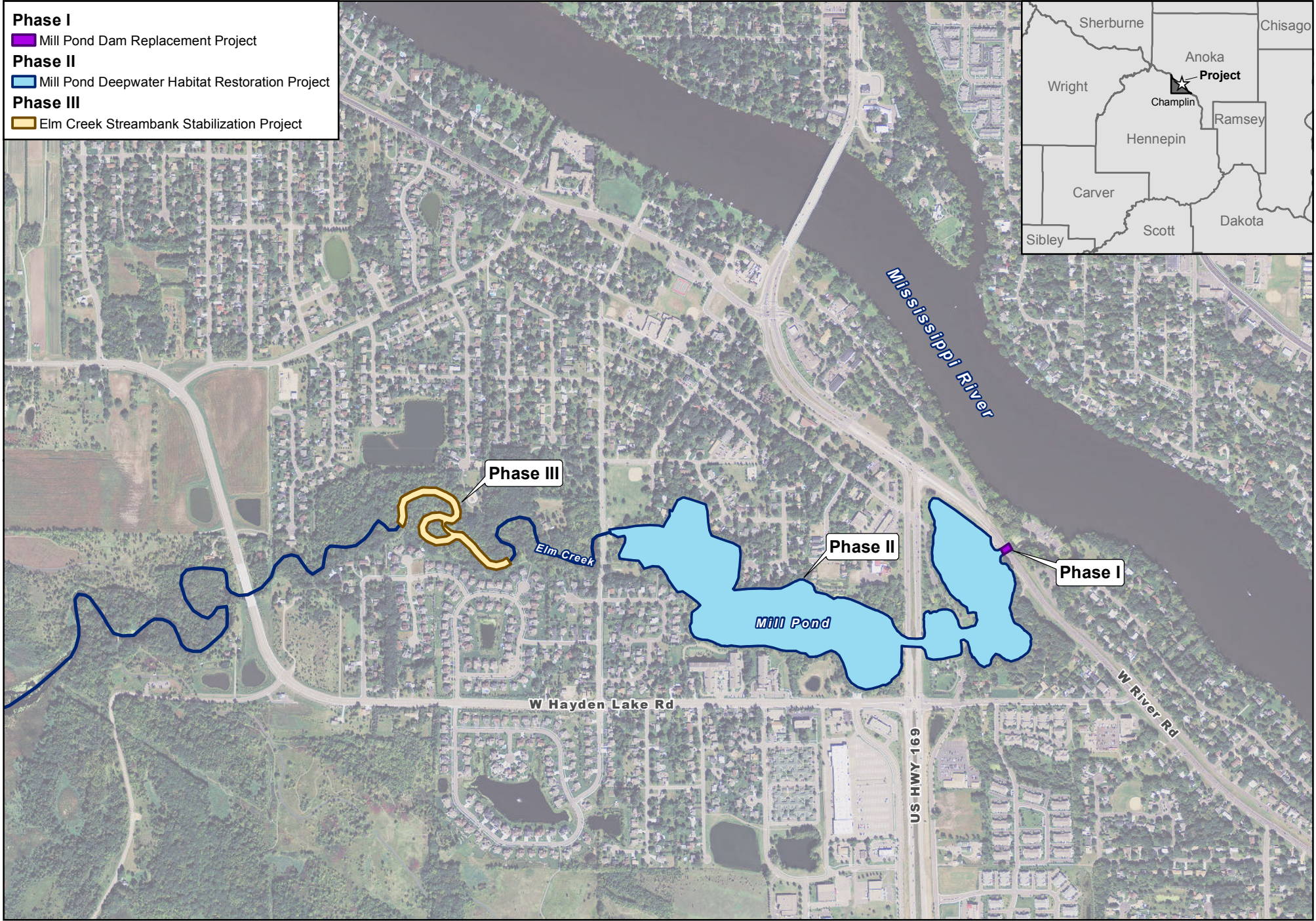
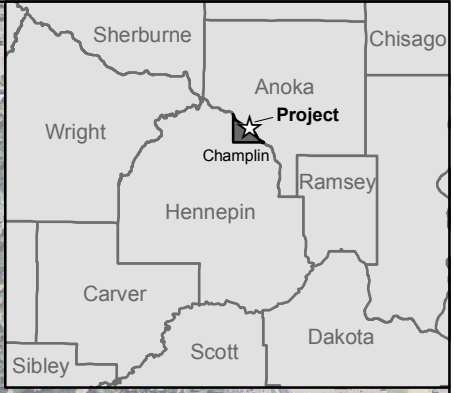
No parcels with an other activity type.

Parcel Map

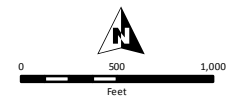


Data Generated From Parcel List

- Phase I**
 Mill Pond Dam Replacement Project
- Phase II**
 Mill Pond Deepwater Habitat Restoration Project
- Phase III**
 Elm Creek Streambank Stabilization Project



RESTORING THE NORTHERN GATEWAY
 CHAMPLIN, MINNESOTA





11955 CHAMPLIN DRIVE, CHAMPLIN, MN 55316-2399 • (763) 421-8100 • ci.champlin.mn.us

June 3, 2015

Lessard- Sams Heritage Council
95 State Office Bulding
St. Paul, Minnesota 55155

Re: Restoring the City of Champlin's Northern Gateway
City of Champlin, Minnesota

Dear LSOHC Board:

The City of Champlin is hereby submitting an application for the 2016 Environment and Natural Resource Trust Fund Grant Program for Phase II , Restoring the City of Champlin's Northern Gateway project.

The proposed improvements for phase two, the *Champlin Mill Pond Deep Water Habitat / Fishery Restoration* are part of a three phase high priority project. This project is under cooperation with the City of Champlin and the Elm Creek Watershed Management Commission to restore water resources located in the Northern Gateway to the City of Champlin. The City of Champlin Water Resources Management Plan, developed in 2008, has identified goals for accelerating programs and projects for improved habitat, water quality and flood control through a variety of conservation measures in areas surrounding the City of Champlin. Prioritization and implementation of appropriate protection, enhancement and restoration measures on area lands, streams, ditches, rivers, lakes and wetlands within the City of Champlin and Elm Creek Watershed have been accelerated through the use of conservation decision-making tools which aid in determining high priority projects that are beneficial to the City of Champlin, Elm Creek Watershed and the Upper Mississippi River Watershed.

The City is requesting funds for phase two of the project in the amount of \$3,000,000, which includes the Mill Pond Deep Water Habitat Restoration. In 2013-2014, the City of Champlin invested funding resources in this phase through completion of sediment studies, conceptual planning and engineering plans. Once funding for this phase is secured, final construction plans can be completed and permits acquired from government agencies prior to the start of habitat restoration construction services.

The City of Champlin is committed financially to the project and we believe that this project will improve water quality and recreational opportunities in the Mill Pond. We look forward to your favorable response to this project and its inclusion in the program.

Sincerely,

Bret Heitkamp
City Administrator